



Technical Data

Conveyor Accessories (DuraPulley65 Pro)

DuraPulley65 Pro

Model: CA-DPUL(P)-NR12565-CS

DuraPulley65 Pro is a high-performance pulley lagging rubber sheet engineered for medium to heavy-duty material handling systems. Manufactured using a robust natural rubber blend, it delivers superior grip, high abrasion resistance, and dependable mechanical strength, making it ideal for preventing belt slippage and ensuring smooth power transmission in conveyor systems operating under higher loads or moderately abrasive conditions.

Its textured back design ensures strong adhesion to metal surfaces, while the option of plain or diamond-patterned top surfaces offers versatility for different operational requirements. DuraPulley65 Pro is the go-to choice for industries seeking consistent traction, longer pulley service life, and improved conveyor system efficiency.

PRODUCT FEATURES



High-grip performance

Formulated with wear-resistant compounds for better belt-pulley traction and reduced slippage



Engineered for durability

Suitable for medium- to heavy-duty conveyor systems under high load and moderate abrasion



Superior bonding capability

Textured back surface ensures excellent adhesion to pulley drums



Surface versatility

Available in both diamond and plain top finishes to suit varied applications



Dimensional stability

Maintains uniform load distribution and operational consistency



Optimized for demanding environments

Performs reliably in high-speed and moderately abrasive conditions



DID YOU KNOW?

Well-designed pulley lagging not only increases belt traction but also extends pulley lifespan by protecting it from wear, corrosion, and surface damage in demanding industrial environments.



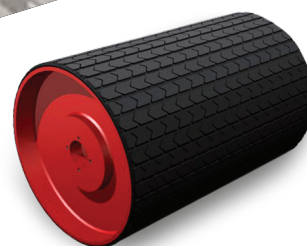
MEASURED PROPERTIES	TESTING STANDARD	SPECIFIED VALUES	OBSERVED VALUES
PHYSICAL & MECHANICAL PROPERTIES			
Tensile Strength	ASTM D412	10.0 MPa (Min)	10.2 MPa
Elongation at Break	ASTM D412	350% (Min)	380%
Hardness	ASTM D2240	65° ± 5° Shore A	66° Shore A
Specific Gravity	ASTM D297	1.25 ± 0.05	1.28
Abrasion Loss (mm ³)	ASTM D5963	200 mm ³ (Max)	180 mm ³
Working Temperature	-	-20 °C to +70 °C	Conforms

CHEMICAL RESISTANCE				
Ozone	Dilute Acids & Bases	Conc. Acids & Bases	Oils	Solvents
Not Recommended	Not Recommended	Not Recommended	Not Recommended	Not Recommended

IDENTIFICATION	
Branding	Duratuf
Grade	Pro
Polymer	NR/SBR
Finish	Top - Diamond/Plain & Bottom - Textured
Packaging	With white coloured HDPE woven fabric
Labelling	Label indicating Product Name, Dimensions, Batch No., Mfg. Month & Year, Quantity, and Package No. to allow traceability

Note: Manufacturing tolerance of ± 10% on thickness, ± 2% on width and length and ±10% on weight shall be applicable.

Applications	<ul style="list-style-type: none"> • High-throughput conveyor systems in mining and quarry operations. • Cement and clinker handling in industrial processing units. • Conveyor drive pulleys in bulk material storage facilities. • Fertilizer plants and chemical handling conveyor lines. • Coal and mineral conveyor systems in thermal power plants. • Belt drive systems in manufacturing and metal plants. • Packaging and logistics centers with high-volume movement.
--------------	---



Ordering Information

Please provide the following details for accurate order processing

Application

End use or industry
(e.g., gasketing, flooring)

Base Material

Required rubber type
(e.g., EPDM, Neoprene)

Dimensions

Length, width
and thickness

Work Environment

Temperature range
or chemical exposure etc

Quantity

Total quantity and
any customization needed.



Scan to Access

Conveyor Accessories
Resources



Scan to Connect

Conveyor Accessories
Expert



Scan to Play

Conveyor Accessories
Trivia



www.duratufproducts.com



info@duratufproducts.com

The technical information corresponds to our present state of knowledge and experience at the date of publishing. Duratuf assumes no liability for use of this information. We reserve the right to change the information without notice.
Edition: TDS-CA-DPUL(P)-NR12565-R0-01-09-2025